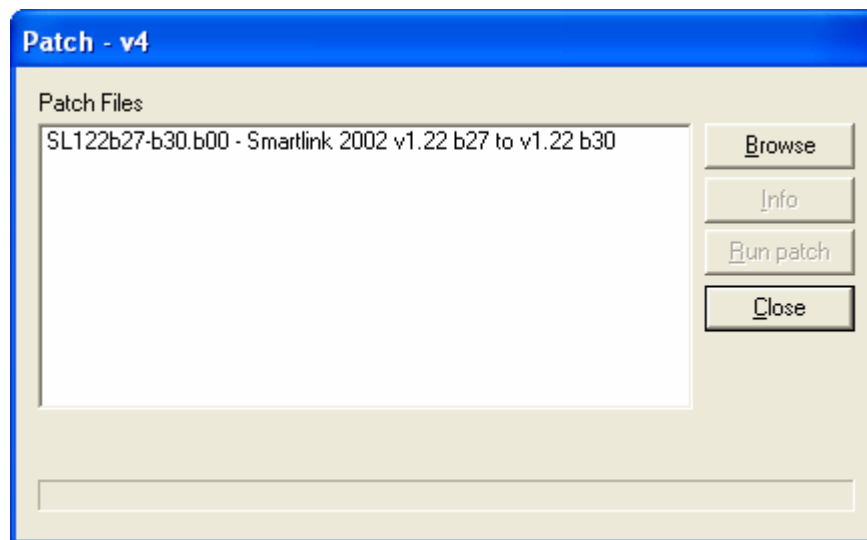


SmartLink 2002 Patch Update Instructions

Steps to patch SmartLink 2002:

1. Save all the patch files to one directory on the **SmartLink 2002 Server** computer. (The patch files are split into multiple parts so they can be saved to floppy disk for easy transfer).
2. Run SLpatch
3. If **SLpatch** is in the same directory as Part 1 of the patch file you should see the file name and a short description of the patch in the file list. If there are no files visible click **Browse** and navigate to the patch file location.
4. Select an update file from the list (see below).



5. Click **info** to view the Readme file for the new version and check to make sure that the install path is correct.
 6. Click **OK** to close the info screen.
 7. If you are using Windows 95 or 98 close any Client Windows that may be running
 8. Click **Run Patch**.
 9. **SLpatch** will: a. Stop the server b. Update the client c. Update the server d. Update the database e. Restart the server
 10. **Close SLpatch** and log in as usual.
- Note: If you are logging on from a remote client the client upgrade process will take place during log on.**